



HCGC has rebranded! We are now:

Health Impact Ohio

Equity. Access. Quality.

Learn more in this month's blog featured below!



Optimal health outcomes for ALL people in EVERY community.



Central Ohio Pathways HUB

**Care Coordination
in the
#CentralOhioHUB**

616 Active Clients

**3,138 Total Clients
Served**

**24,253 Pathways
Initiated**

**17,936
Pathways
Completed!!**



Healthcare Collaborative
of Greater Columbus

FEATURED CONTENT



Community Health Workers for COVID Response and Resilient Communities

Health Impact Ohio Awarded CDC Funding to Help Community Health Workers Address COVID-19 Across Ohio

Health Impact Ohio has been awarded a 3-year, \$5 million dollar per year grant from the Centers for Disease Control and Prevention (CDC) to manage a statewide, comprehensive initiative to engage Community Health Workers (CHWs) around the state to provide coordinated connection to COVID-19 education, care and social services.

The project will expand CHW's participation in the overall public health response through case investigation, COVID-19 related education and information sharing, and most importantly, CHWs roles in eliminating barriers to accessing the COVID-19 vaccine.

The CDC initiative, titled Community Health Workers for COVID Response and Resilient Communities (CCR) will provide funding via Health Impact Ohio to ten regionally focused Pathways Community HUBs (PCHs) across the state. Each PCH is a member of the Ohio Network of Certified Community Pathways HUBs and provide service to 66 of Ohio's 88 counties, accounting for over 7 million residents. PCHs across Ohio are subcontracted with 70 community-based organizations called Care Coordination Agencies (CCAs) within their respective regions. There are currently 205 CHWs employed by the PCHs across the state who will expand COVID-19 care resource coordination through the CCR initiative.

“This statewide approach will support and expand the efforts of CHWs, boots-on-the-ground, community members, who are trusted experts to help their neighbors continue to navigate this public health crisis,” said Carrie Baker, Health Impact Ohio President & CEO. “Through this funding, we envision deploying CHW best practices for public health efforts related to the current pandemic and increasing the use case for CHWs and the HUB model to equitably address any public health, social determinants of health, or medical issue facing our neighbors and our communities.”

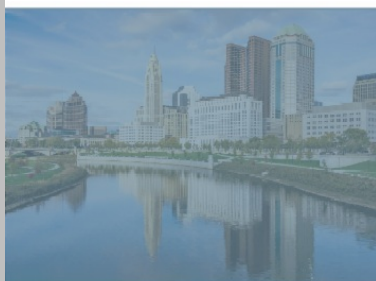
Health Impact Ohio, a regional healthcare improvement collaborative, manages one of the largest PCHs nationally and statewide, the Central Ohio Pathways HUB (COPHUB). COPHUB serves an average of 650 clients working with over 50 COPHUB CHWs. In 2022, 13 community based CCAs in Central Ohio are working collaboratively in COPHUB.

“At the onset of the pandemic, CHWs working for COPHUB engaged their clients in COVID-19 education by the thousands, assisting central Ohio clients in understanding the ever-

changing, complex, and sometimes confusing navigation of a novel virus and an increasingly devastating social situation,” said Jenelle Hoseus, CEO of COPHUB. “This opportunity brings additional world-class training resources and partnerships among all HUBs across the state that otherwise weren’t yet available,” said Hoseus.

Other partners on this grant award include Partners in Health (PIH), Ohio State University College of Public Health Center for Health Outcomes Policy and Evaluation (OSU HOPES), Nationwide Children’s Hospital and Strategic Research Group (SRG). CHW trainings will encompass instruction from Nationwide Children’s Hospital on how to effectively engage community members to encourage participation in public health efforts to curb the uptick in COVID-19 cases. PIH will provide comprehensive trainings on the epidemiological and social implications of the pandemic, giving CHWs in depth knowledge to make them thought leaders and trusted messengers in their communities. Finally, the Ohio State University College of Public Health will expand statewide their novel COVID-19 “equity mapping tool,” successfully piloted in Franklin County at the height of the pandemic to each PCH service areas. The mapping tool will use COVID-19 case rate and vaccine uptake data to inform public health strategy and CHW deployment to the neighborhoods that are most at risk for further negative impacts of the pandemic. Strategic Research Group and OSU HOPES will provide evaluation of outcomes related to this effort.

“As a model, Community Pathways HUBs across Ohio and the country have demonstrated success in maximizing grant and/or public funding by reducing duplication in care coordination, reducing variation in resources among individuals regardless of language, ethnicity, race or socio-economic challenges, and reducing other costly consequences for clients with multiple barriers, such as the cost of eviction and rehousing, or the cost of an Emergency Department visit when a primary care visit was more appropriate,” said Carrie Baker, President & CEO of Health Impact Ohio. “To apply this approach to this ongoing pandemic will only benefit individuals in our communities as we tackle and emerge from COVID safely and equitably.”



INSIGHTS FROM THE BLOG

New Year, New Us! HCGC is Now Health Impact Ohio

By: Carrie Baker, President & CEO

The Healthcare Collaborative of Greater Columbus (HCGC) is excited to announce that we are rebranding in 2022. Over the next few months, thanks to the



innovative thinking of our Board of Directors, we will transition to **Health Impact Ohio**.

Since 1999, this organization, originally known as Access HealthColumbus, has evolved with the ever-changing landscape of health and healthcare in the region. We have enjoyed a very rich history of collaboration with Columbus and Central Ohio partners and catalyzed that work and those successful outcomes to broaden our reach and impact across

Ohio. Health Impact Ohio as a name reflects and aligns with the work that we do, focusing on optimal health outcomes for all individuals in every community. And yet our roots, our organization location and frankly our hearts will always stay firmly grounded in the Central Ohio Region first and foremost. We invite you to learn more about our impact and evolution by reading our [2021 Impact Report](#).

Becoming Health Impact Ohio

Over the last 5 years it has truly been my honor to serve, sustain and help the growth of this incredible organization. Even in dealing with “change fatigue” we are all facing given recent times, HCGC has allowed me, personally and professionally, to see a bigger picture, to understand both and/or often multiple (!) sides of the proverbial coin when it comes to health and healthcare from individual, community and regional perspectives. I am grateful to see firsthand the brilliance of a neutral, community-created, collective impact nonprofit that serves, without bias, to bring every type of (often competing) health, healthcare, and community entities together.

In convening these amazing partners, we not only increase **access** and share, spread, scale and track efficacy of best practices in a way that lifts everyone up, but also, we work to address gaps from a big-picture point of view. HCGC and our partners address these gaps without blame or defensiveness, but instead with an eye toward increasing **equity**, trust, and data-driven collaboration to meet better outcomes, to reduce duplication, variation, costs all while enhancing health and healthcare **quality** and all consumers’ experience. Each day, our staff team wakes knowing we all get to work for an organization that is a “kick-starter” to attaining optimal health from a “systems” approach.

We've
Rebranded!
HCGC is now:

Learn more and stay engaged:



Health Impact Ohio's Vision:
We believe in optimal health outcomes for *all individuals* in *every community*.

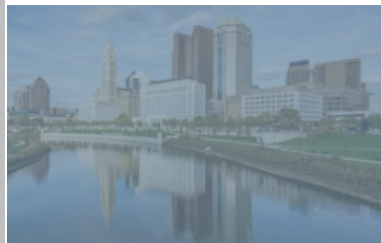
Health Impact Ohio's Mission:
We improve the health of our communities by addressing the social drivers of health, health equity, access and clinical quality, through community engagement and partnership; multi-stakeholder training and coaching; data collection and integration; and strategy development and deployment.

Read full blog for more details...



We've released our 2021 Impact Report, highlighting our impact on health, community engagement, and education and equity in Central Ohio. Our Impact Report walks through the work of our Board of Directors, staff, themes from the year, the impact of the HUB, the impact of being a care coordination agency in the HUB, connection to care and services through HUB Pathways, and illustrates the highest served areas in central Ohio.

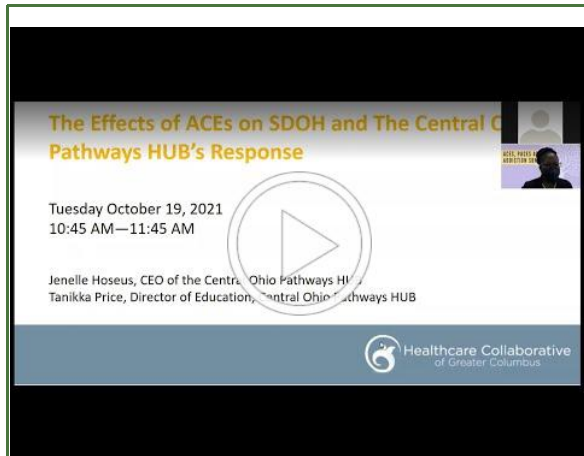
Visit our 2021 Impact Report



CENTRAL OHIO PATHWAYS HUB



CHW Profile Project
This month, Health Impact Ohio



The Effects of ACEs on Social Determinants of Health and the

continued their Community Health Worker (CHW) Profile Project, interviewing various Central Ohio Pathways HUB CHWs on their experiences and successes.

This month, we interviewed Kimberly Parker, a Recovery Support Specialist and Central Ohio Pathways HUB CHW at PrimaryOne Health. Kimberly shared her experiences as a CHW offering support with addiction and behavioral health.

Watch more CHW Profile Project interviews on our website [here](#).

Watch on
YouTube

Central Ohio Pathways HUB's Response

Jenelle Hoseus, CEO of the Central Ohio Pathways HUB, and Tanikka Price, Director of Education of the Central Ohio Pathways HUB, presented at the ACEs, PACEs, and Addiction Summit. They explain how ACEs contribute to social determinants of health, and describe how the Central Ohio Pathways HUB model responds to those social determinants of health, thereby addressing the lasting effects of ACEs.

Watch on
YouTube

Central Ohio Pathways HUB Team in Action!

In December, some of the Health Impact Ohio Central Ohio Pathways HUB team picked up Personal Protective Equipment (PPE) from the Mid-Ohio Food Collective, as donated by the Columbus Chamber of Commerce. The donated items included disposable masks, alcohol wipes, hand sanitizer, and surface disinfectant wipes. These items were distributed to two of our agencies, PrimaryOne Health and Columbus Urban League.



**NEXT CHW
MONTHLY MEETING**



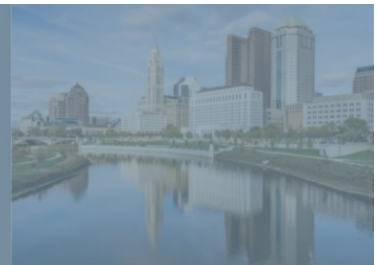
Thursday, February 10, 2022
9AM-11AM

Supervisor Sign-Off Time:
11-11:30AM

*Virtual - Dial-in information to come via email from HUB staff



PARTNER NEWS AND EVENTS



[Center for Community Solutions: New Guidance to Implement 12 Months of Postpartum Medicaid Coverage](#)

[NIHCM Foundation: Omicron Overwhelms Hospitals](#)

[Center for Community Solutions: Vaccination Efforts in Ohio Have Saved Medicaid Millions](#)

